

RIDE THE BUS

**HTA**

HUMBOLDT TRANSIT AUTHORITY

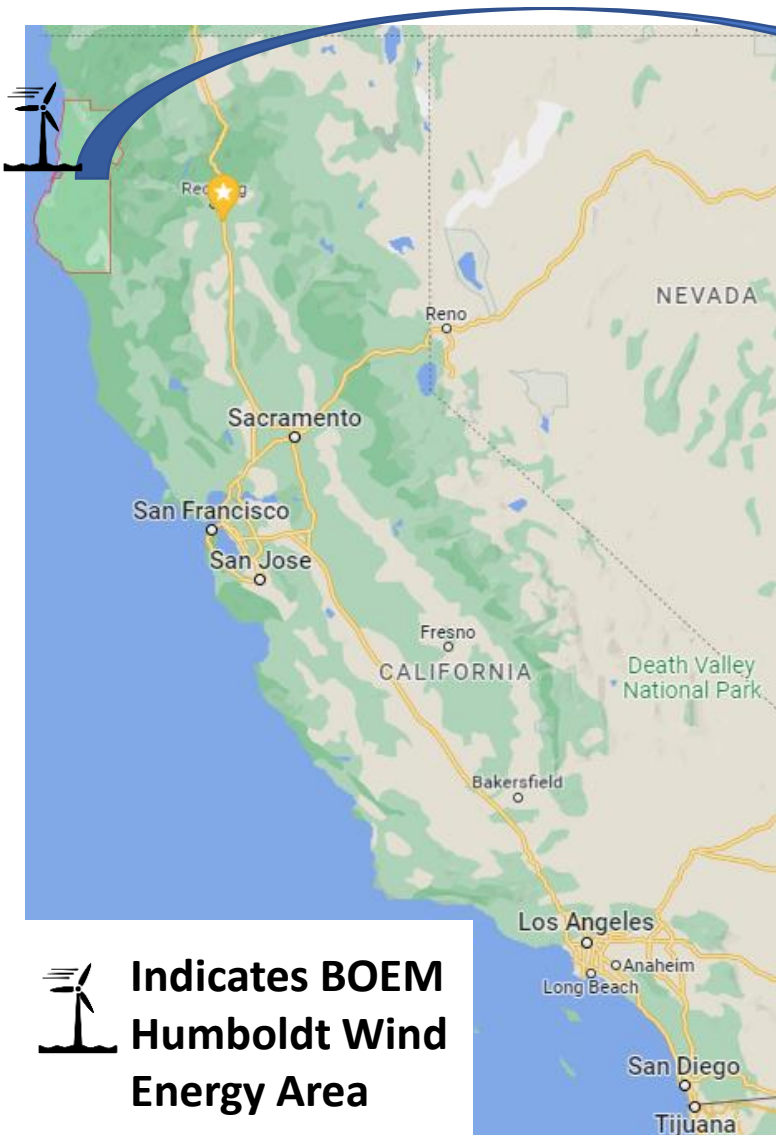
Humboldt Transit Authority

# Request for Proposals for Project 23-01

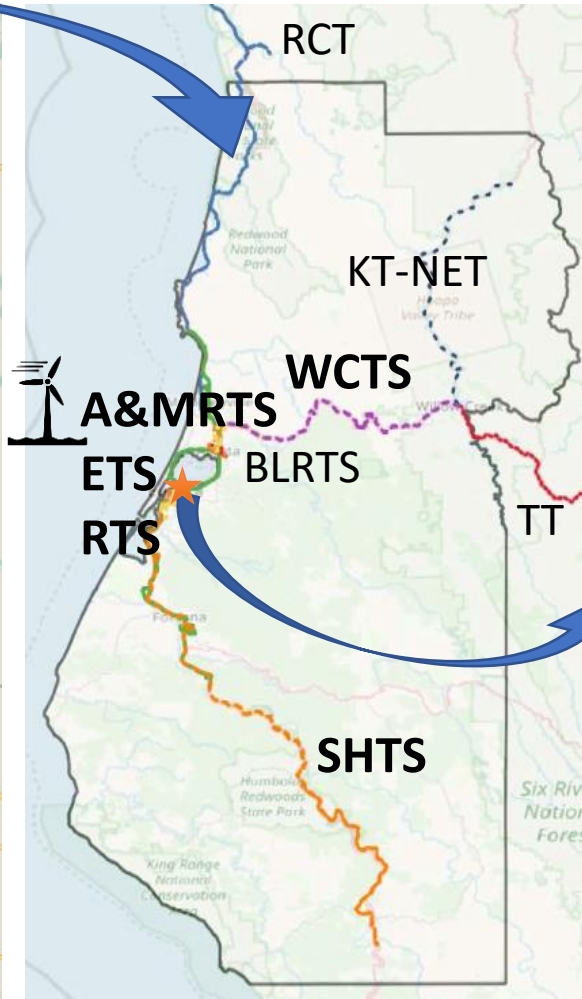
to Design and Build a Hydrogen Refueling Station

Jerome Qiriazhi  
Procurement Manager

# ABOUT HTA AND HUMBOLDT COUNTY



 **Indicates BOEM Humboldt Wind Energy Area**



**Humboldt County**  
**Population: 136,000**  
**Pop Density: 38 / sq. mi.**



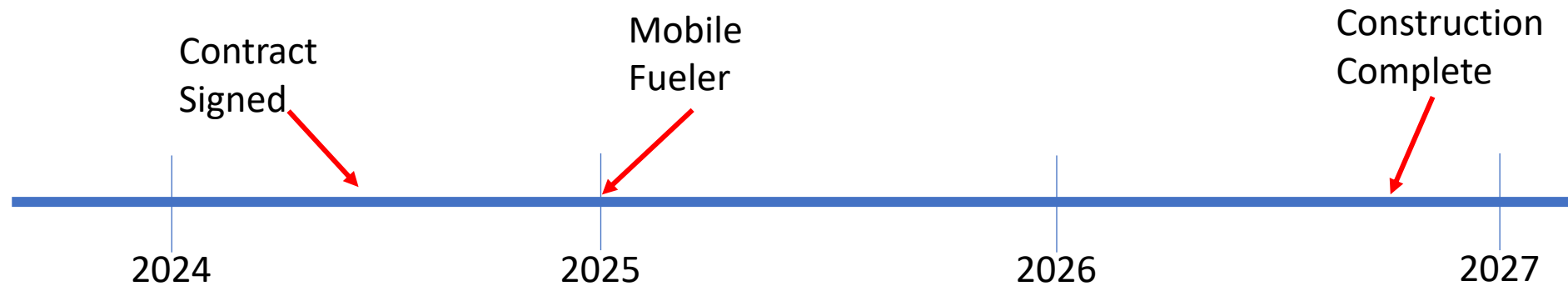
- 5 fixed route systems operated and maintained
  - 2 intracity, 3 intercity
  - 2,200 daily riders, 4,400 daily miles
  - 20 active vehicles per day, spare ratio ~2:1
  - Daily VMT ranges from 120 to 400
- 1 paratransit system
  - Co-mingled with on-demand microtransit

# SCHEDULE OF EVENTS

Procurement Activity	Date and Time (Pacific Time)
RFP Distributed to Qualified Bidders List	February 15, 2024
RFP Mandatory Sitewalk	9:00 AM February 27, 2024
RFP Questions Due	5:00 PM March 14, 2024
HTA Responses to RFP Questions and Addenda (if any)	5:00 PM March 21, 2024
RFP Proposals Due and Opening of Proposals	3:00 PM April 3, 2024
RFP Interviews	April 17, 2024
Notice of Determination	April 24, 2024
Notice of Award	May 1, 2024
Delivery of first fuel cell electric bus to be fueled with Temporary Fueler	December 15, 2024
Delivery of 10 fuel cell electric buses	Two per month from June, 2026 through October, 2026

# SCOPE OF WORK

1. H35 Base Bid with Liquid Supply
2. H70 Light Duty (LD) Mandatory Add-Alternate
3. O&M Services: 2 years + 3 1-year options to extend
4. Fuel Supply: 2 years + 3 1-year options to extend

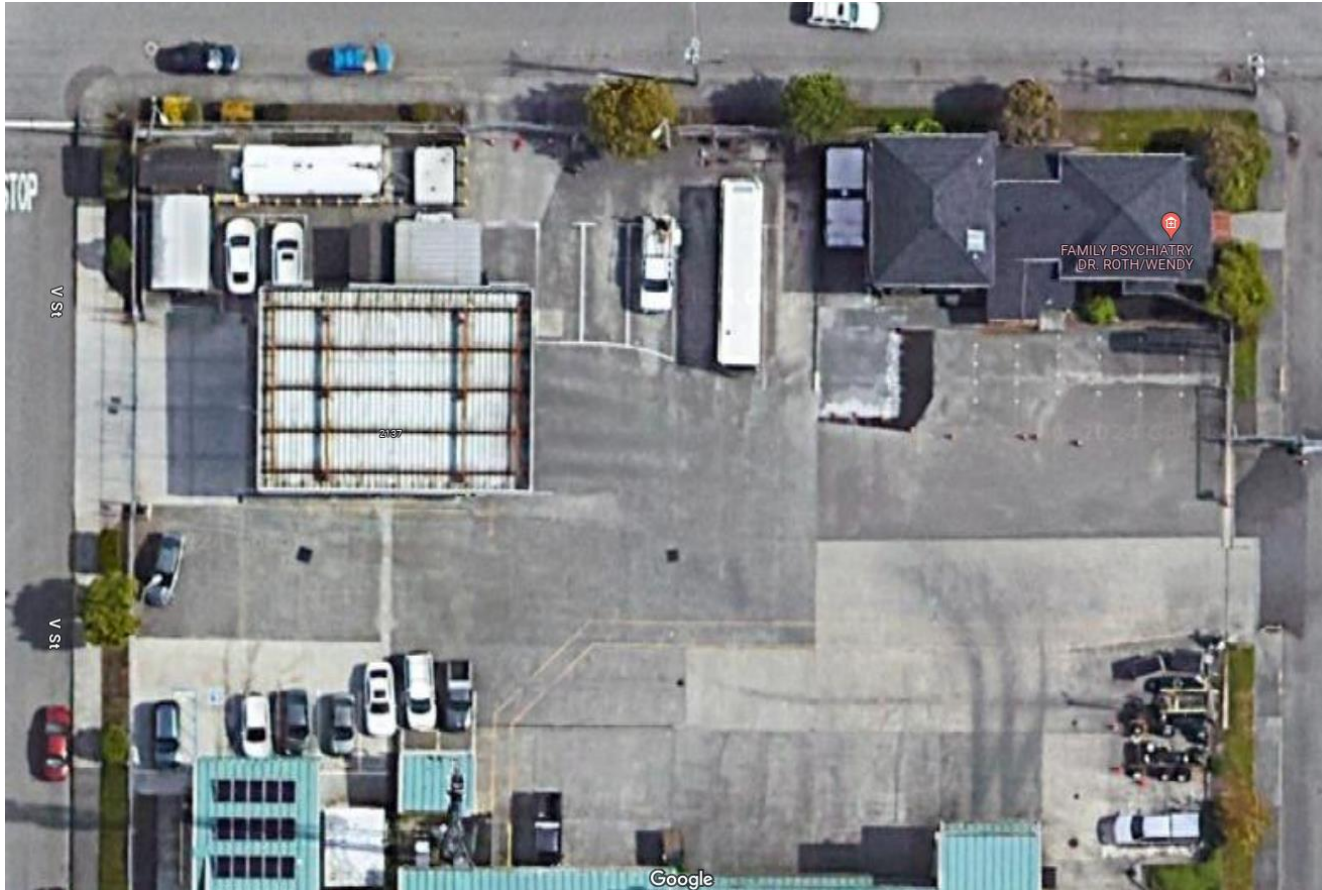




# SCOPE OF WORK

1. H35 Base Bid with Liquid Supply
  - Includes “make ready” for H70 LD/MD/HD fueling

Coastal Commission will need to approve use of this location. HTA already met with the Coastal Commission once and there were no significant red flags raised.

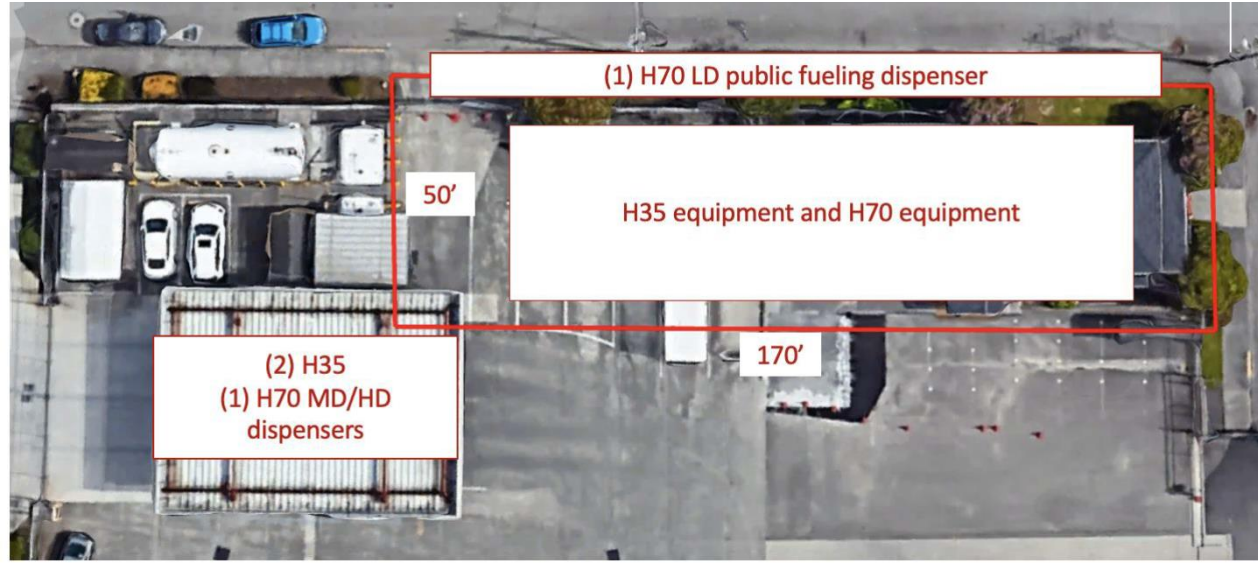




# SCOPE OF WORK

1. H35 Base Bid with Liquid Supply
  - Includes “make ready” for H70 LD/MD/HD fueling

Coastal Commission will need to approve use of this location. HTA already met with the Coastal Commission once and there were no significant red flags raised.





# SCOPE OF WORK

## 1. H35 Base Bid with Liquid Supply

- Includes “make ready” for H70 LD/MD/HD fueling
- Integrate with FuelMaster
- Separately metered, comply with LCFS capacity credit requirements
- H70 Fuel Readiness Plan
- Must complete 11 back-to-back fills in 3 hours
  - 2 buses at 50kg fills
  - 9 buses at 40 kg fills
- Temporary Fueler
  - Design for 75 kg/week
  - Cost and fuel included in Capital charges

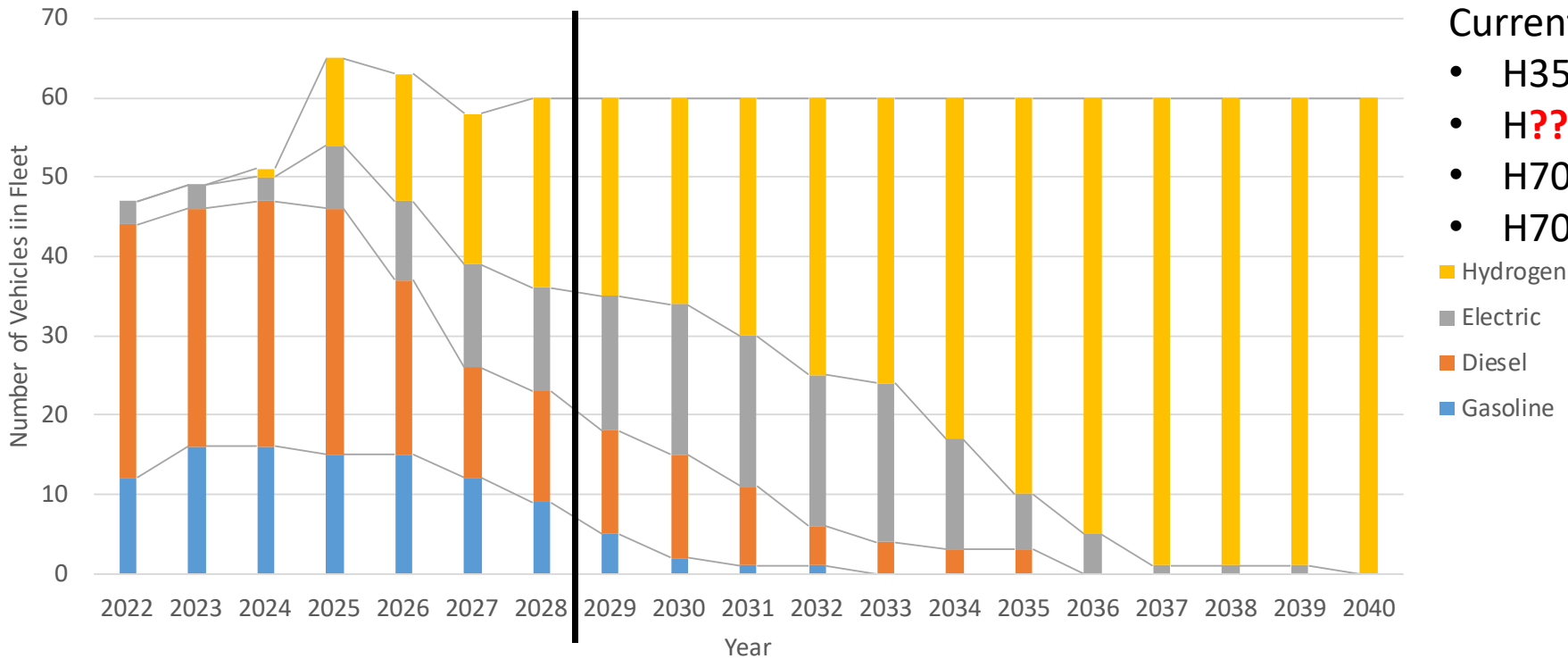
Coastal Commission will need to approve use of this location. HTA already met with the Coastal Commission once and there were no significant red flags raised.



# SCOPE OF WORK

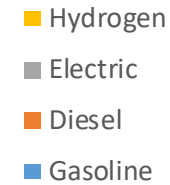
1. H35 Base Bid with Liquid Supply
  - Includes “make ready” for H70 LD/MD/HD fueling

Target fleet transition for all transit vehicle types for current fleet



## Current Fleet

- H35 City Buses: 30
- H?? Light MD Cutaways / Vans = 18 - 20
- H70 MD Cutaways = 6 - 8
- H70 HD Coaches = 4 - 6

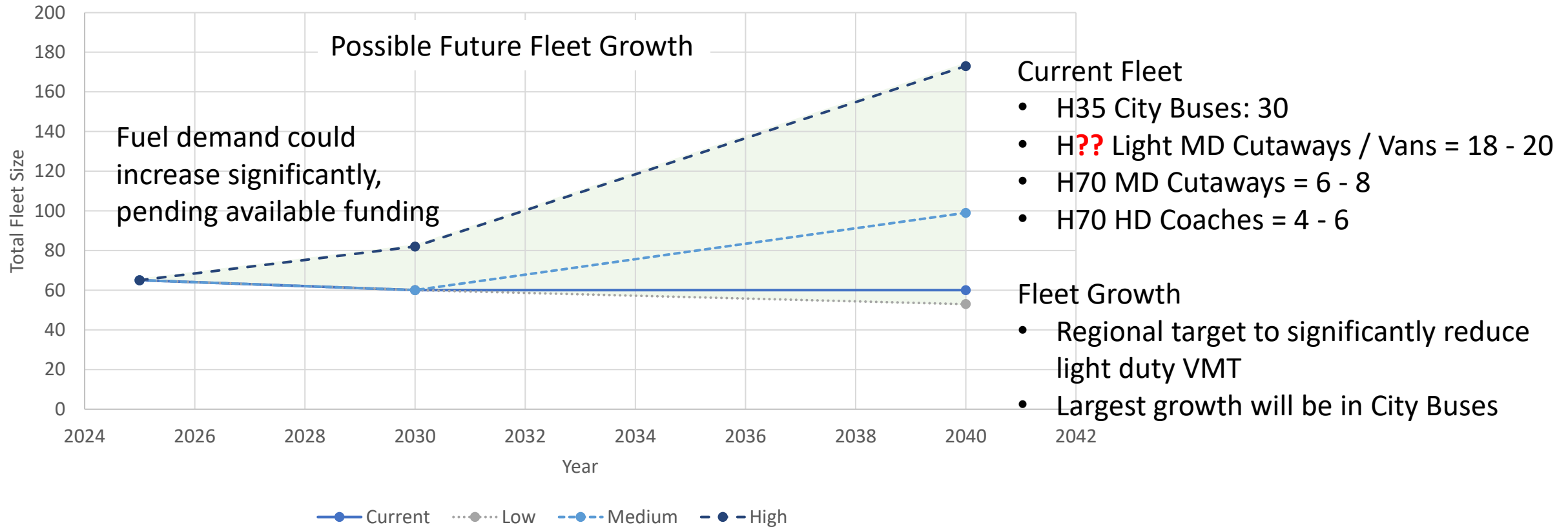




# SCOPE OF WORK

## 1. H35 Base Bid with Liquid Supply

- Includes “make ready” for H70 LD/MD/HD fueling



# SCOPE OF WORK

1. H35 Base Bid with Liquid Supply
2. H70 Light Duty (LD) Mandatory Add-Alternate
  - Designed to fill both light duty and medium duty vehicles, and should be capable of fueling up to 30 kilograms in a single fill according to SAE J2601 Category D.
  - Must comply with LCFS capacity credit requirements
  - HyStEP 2.0 shall be utilized if available
  - HTA in discussions with multiple fleets and multiple large industrial developments in the County interested in fuel cell fleet vehicles,
    - Including extensive port development to support offshore wind deployment

**HTA is also making in-yard H35 and future H70 MD/HD fueling available to private fleets**

- **To allow fleets to test the performance of fuel cell vehicles**
- **For backup / resiliency fueling should they adopt fuel cell vehicles**



# SCOPE OF WORK

Entire Scope of Work is under one contract.

1. H35 Base Bid with Liquid Supply
  - Includes “make ready” for H70 LD/MD/HD fueling
2. H70 Light Duty (LD) Mandatory Add-Alternate
3. O&M Services: 2 years + 3 1-year options to extend
  - 24-hour response time
  - Station cannot be down for more than 72 hours without providing an alternate fueling solution
4. Fuel Supply: 2 years + 3 1-year options to extend
  - 33.3% minimum renewable hydrogen
  - Price shall not at any time be higher than the highest price on any active statewide contract for hydrogen fuel held by the California Department of General Services.

# EVALUATION CRITERIA

Technical Proposal (TP) Item	Maximum Points
Project Understanding	10
Technology Solution and Performance	30
Work Plan and Schedule	20
<b>Total TP Points</b>	<b>60</b>

Price Proposal (PP) Item <i>PP Item: description = Form Q spreadsheet cells</i>	Relative Score (RS)	Maximum Points (MP)	Awarded Points
1. <b>BC</b> : Base Bid Charges, Less O&M Services Line Item = C23 - C15	$\frac{\text{Lowest BC}}{\text{Proposer's BC}}$	12	$\sum_{i=PP \text{ Item } 1}^{PP \text{ Item } 4} RS_i \cdot MP_i$
2. <b>AC</b> : Sum of Add Alternate Charges and Total Add-Alternate Annual Fees for all Option Term years = D23 + E39 + F39 + G39	$\frac{\text{Lowest AC}}{\text{Proposer's AC}}$	4	
3. <b>WC</b> : Sum of Base Bid Charges O&M Services Line Item and Total Base Bid Annual Fees for all Option Term years = C15 + E32 + F32 + G32	$\frac{\text{Lowest WC}}{\text{Proposer's WC}}$	12	
4. <b>FC</b> : Sum of Total Annual Fuel Charges over the Initial Term and all Option Term years = C50 + D50 + E50 + F50 + G50	$\frac{\text{Lowest FC}}{\text{Proposer's FC}}$	12	
<b>Total PP Points</b>	--	<b>40</b>	

1. Cost is 40% of total score
2. Cost of H70 LD Add-Alternate is also weighted
3. Cost of Transitional Services is ~24% of total score
  - O&M cost is ~12% of total score
  - Fuel cost is 12% of total score

Request particular attention be paid to minimizing losses during

- delivery and
- storage.



# OTHER NOTABLE ELEMENTS OF THE CONTRACT

Benefits of payment schedule:

- HTA - Spread out costs to manage cashflow
- DB - Provide cash liquidity

Construction Milestone	% of Capital One-Time Charges, less Initial Term Transitional Services	Date
(i) Upon evidence of long-lead items purchased	<u>10%</u>	
(ii) Upon demolition of the Cedar House; all building materials have been properly disposed of and all utilities properly terminated as applicable	<u>5%</u>	
(iii) Upon first successful fueling event with the Temporary Fueler	<u>5%</u>	
(iv) PE signed plans and permit application submitted to the local AHJ	<u>10%</u>	
(v) Plan-check approval received from local AHJ and permits ready to issue.	<u>10%</u>	
(vi) Construction mobilization: all temporary facilities installed at site, and construction permit issued	<u>10%</u>	
(vii) All earthwork complete and structural concrete foundations poured	<u>10%</u>	
(viii) Cryogenic vessel successful installed and anchored on foundation	<u>10%</u>	
(ix) Mechanical completion	<u>10%</u>	
(x) Submission of Commissioning Certificate	<u>5%</u>	
(xi) Submission of Operational Performance Test Report	<u>5%</u>	
(xii) Final Payment	<u>10%</u>	

Progress payments tied to

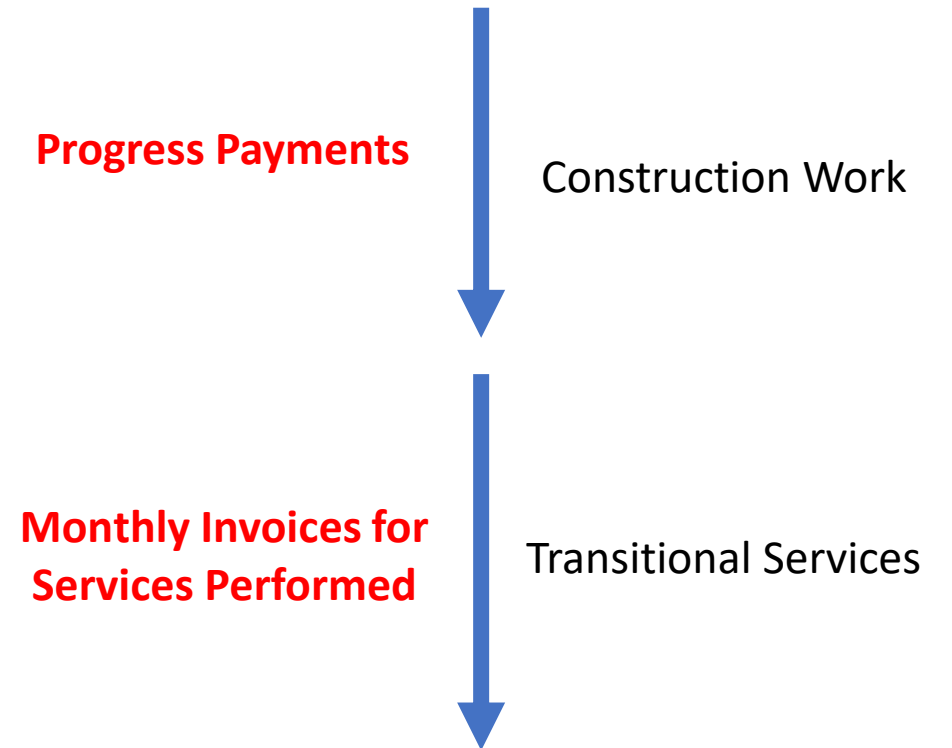
- Completion of demolition
- Successful fueling event with mobile fueler

At completion of construction. This initiates O&M Services and Fuel Supply

# OTHER NOTABLE ELEMENTS OF THE CONTRACT

1. No Federal funding flow-down provisions
  - No DBE
  - No Buy America – Build America
2. Transitional Services
  1. Comprised of O&M and Fuel Supply together
  2. Initiated after Final Acceptance of Construction Work
  3. No Performance Bond requirement for O&M
  4. Supply Bond required for Fuel Supply

## Contract Payment Structure





RIDE THE BUS

**HTA**

HUMBOLDT TRANSIT AUTHORITY

Humboldt Transit Authority

# Questions