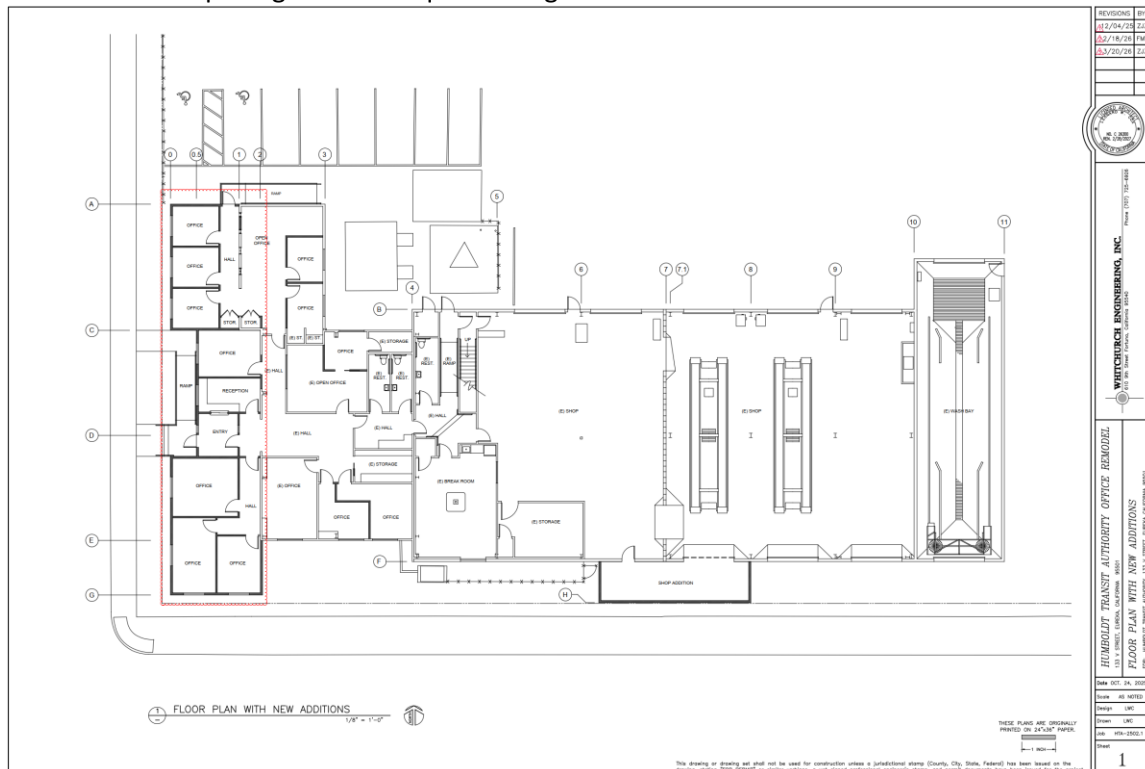


April 1, 2026

Project 26-01: Office Remodel IFB Version 2 – Questions and Answers

Answers to questions received **as of 4:00PM PT on March 30, 2026** are shown below. This document will be updated if additional questions are received. The due date for questions and answers is shown in the bid documents.

1. Has there been any changes to the drawings to fit within the engineer estimate?
 - a. There has been only minor revision to the scope of work that included the Asbestos Survey and presence of asbestos. Therefore no revision to the engineer estimate was made. Bidders are encouraged to submit proposals at the cost needed to complete the work. The engineer's estimate is not the maximum award amount.
2. I'm going over the plans for the re-bid of this project and I see there is an added page # 1, floor plan with new additions that has multiple doors that aren't on the door, window & finish schedules page. It looks to me that there could be a total of 14 more openings but the door schedule doesn't call them out. Are these openings in this project scope or is that just showing future expansion? I have attached the page # 1 with clouded openings that I am questioning.



- a. Please disregard that page, it was included in error. There are no building additions at this time. This page will be removed as an addendum after the question period has ended.

3. Frames on the door schedule are listed as steel, but there is no steel door frame specification. A steel frame would be by a company like Timely or others (Not Ceco, Steelcraft, others). Provide clarification. Do you mean steel as in hollow metal? Not a prefinished steel, correct?
 - a. Frame material listed in Door Schedule as steel should instead be hollow metal. Frames for doors 103B, 103C, 109A, and 109B are to be knock-down hollow metal. Frame for door 102 is to be welded hollow metal.
4. Mark 102 is listed as a steel frame. We would recommend using a welded hollow metal frame per section 081113 (Hollow Metal Doors and Frames). Confirm change or provide clarification. Refer to question #1 above.
 - a. Frame for door 102 is to be welded hollow metal, as recommended.
5. Mark 106A – what is meant by “per manuf.” for the frame & hardware material? There are no part numbers listed to see what is meant by that? There are many different types of pocket frames with hardware available.
 - a. For door 106A, the pocket door frame is to be “CS Cavity Slider” aluminum pocket frame system, by Cavity Sliders USA Inc. (cavitysliders.com). Frame size as required for 2x4 wall studs, and 3'-6" x 6'-8" x 1-3/4" door size. Per manufacturer, frame can be cut down on site as needed to match specified door width and height.
 - b. ADA accessible pocket door hardware is to be “Cavilock CL100 ADA Lever” mortise lockset, by Cavity Sliders USA Inc. (cavitysliders.com). Provide key lock (Schlage C keyway) at Office 106A exterior and ADA turn at Office 106A interior (model CL100A7018).
6. Do hardware group 1 & 2 need any electric hinges, electric strikes, power supplies or wiring harnesses for the electronic locksets? None are called out in the hardware groups. Provide some clarification.
 - a. The electronic locksets are to be installed by others after completion of construction, per Door Notes No. 12. No electric hinges, electric strikes, power supplies, or wiring harnesses will be provided as part of the work included in the bid for this project.