

PG&E EV Infrastructure

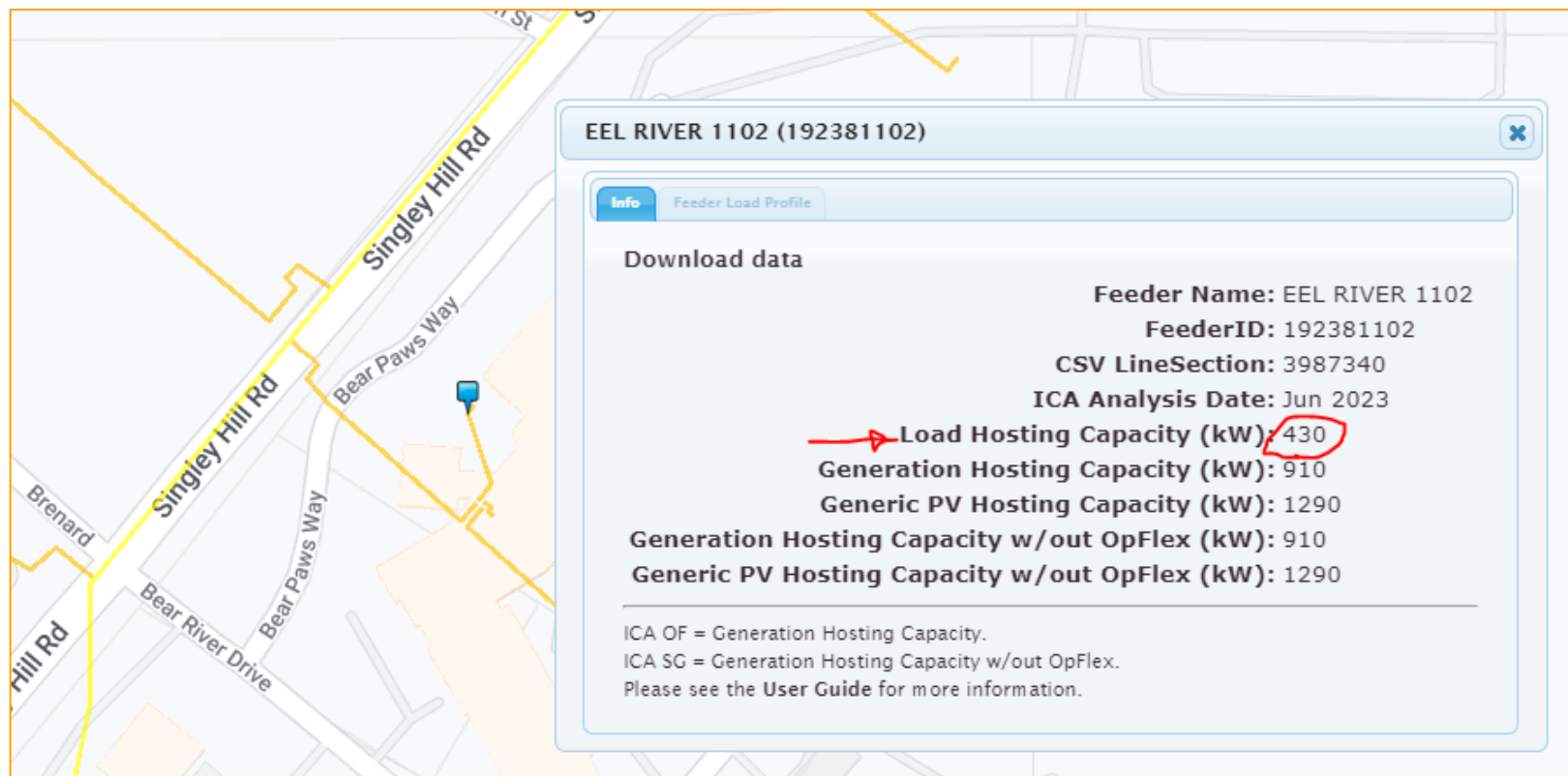


Together, Building
a Better California

Dean Kunesh

Dean.Kunesh@pge.com

Power – PG&E ICA Map

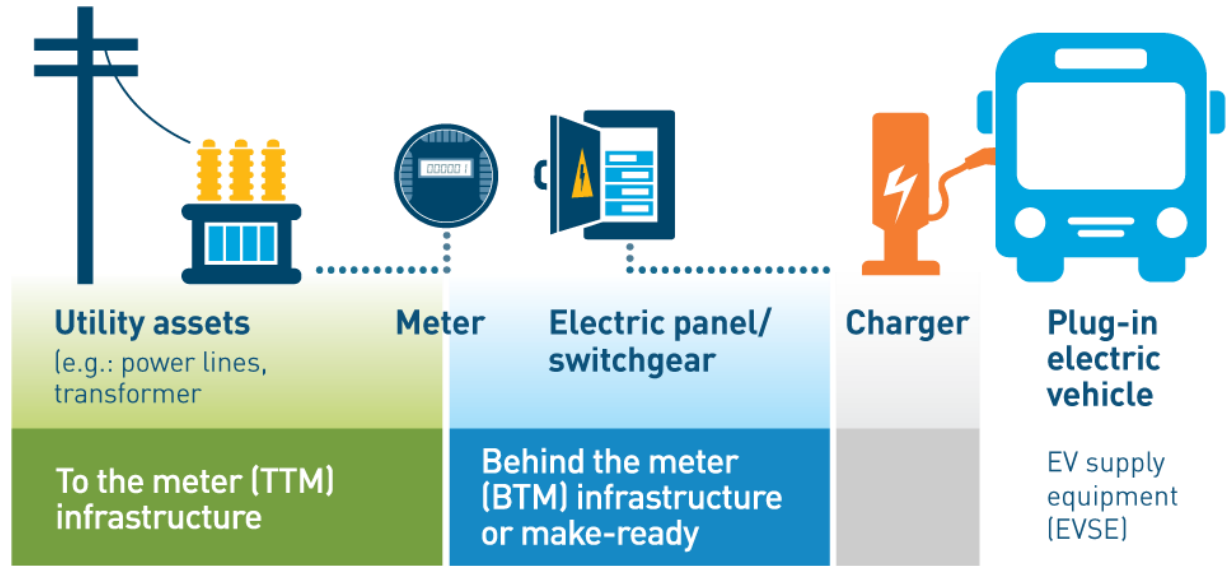


[PG&E Integration Capacity Analysis and Distribution Investment Deferral Framework maps \(pge.com\)](https://pge.com)



EV Fleet program vs Service Planning Rule 29

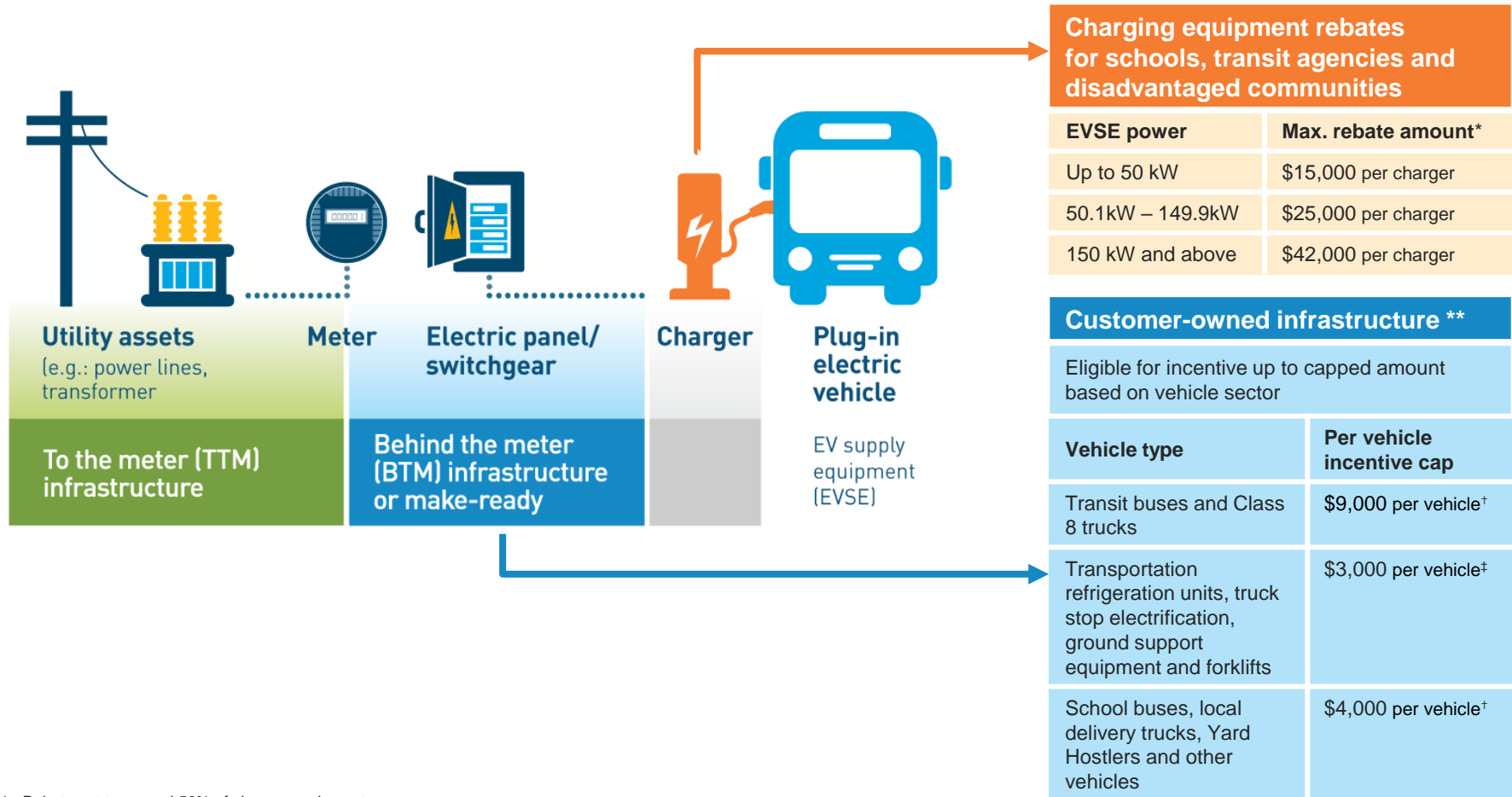
PG&E pays for infrastructure cost up to the customer meter*



Who constructs, owns, and maintains?	PG&E	The customer	The customer
Who pays for?	PG&E	The customer	The customer
Available rebates/incentives?	EV Fleet – fully paid for by PG&E Service Planning Rule 29 – fully paid for by PG&E	EV Fleet - Incentives may be available to offset your out-of-pocket costs Service Planning Rule 29 - none	EV Fleet - Charger rebates available for transit agencies, schools, and some sites located in disadvantaged communities Service Planning Rule 29 - none



EV Fleet program incentives and rebates



* Rebate not to exceed 50% of charger equipment.

EVSE must meet minimum and standard requirements to be eligible for rebate.

Fortune 1000 companies are not eligible.

** Customer-owned eligibility at PG&E discretion based on project scope and associated costs.

Incentive not to exceed 80% of customer out-of-pocket costs.

[†] Limited to 25 vehicles per site.

[‡] Limited to 50 vehicles per site.

EV Fleet program - How to prepare

What we need from **you**



Demonstrate commitment
with **2 or more** EVs by end of
2027



Demonstrate long-term
electrification growth plan and
schedule of load increase



Provide data related to
charger usage for
a minimum of **5 years**



Own or lease the property
where chargers are installed, and
operate and maintain vehicles and
chargers for minimum of **10 years**

EV Fleet program electrification process

PRELIMINARY DESIGN (3–5 months)

FINAL DESIGN and EXECUTION (6–8 months)

- CUSTOMER TASK
- PG&E TASK



START

1 SUBMIT EV FLEET APPLICATION

Consult with your fleet OEM and/or electrical contractor to prepare and complete a PG&E EV Fleet program application pge.com/evfleetapp

2 CUSTOMER INFRASTRUCTURE DESIGN

Electrical contractor designs your charging system infrastructure behind-the-meter (BTM), which includes charging stations

6 SIGN CONTRACT

All parties review and approve the proposal. Contract is signed

5 PG&E ESTIMATE

PG&E calculates the time, effort and cost of your build-out (referred to as rough order of magnitude, or ROM)

PG&E INITIAL DESIGN

PG&E works with you and your electrical contractor on an optimal design

- 3 PG&E estimates how much electric capacity you'll need (referred to as a capacity check)
- 4 PG&E surveys your site and provides initial design of your to-the-meter (TTM) infrastructure build-out

7

CUSTOMER BEGINS BTM CONSTRUCTION PROCESS

Submit/obtain permit from local jurisdiction

8

PG&E FINAL DESIGN

PG&E finalizes TTM design

9

9 Construct electrical infrastructure behind the utility meter

10

10 Install EVSE/charging equipment

11

11 Complete municipal inspection(s)

CUSTOMER BTM CONSTRUCTION

12

PG&E TTM CONSTRUCTION

PG&E constructs utility infrastructure, installs meter and makes any necessary transformer upgrades

14

CUSTOMER COMMISSIONS EVSE EQUIPMENT

Ensure equipment is functioning as intended:

- Test EVSE for voltage
- Ensure connectivity to equipment manufacturer network

13

PG&E TURNS ON SERVICE

PG&E activates your service once inspections are complete

15

PG&E ISSUES QUALIFYING REBATES

COMPLETE



Thank you!

Dean Kunesh

Dean.Kunesh@pge.com

Service Planning electrification process

CUSTOMER ELIGIBILITY

Did you know that PG&E has different EV Programs?

- EV Charging for Medium and Heavy Duty Fleets
- EV Fast Charge Program

Am I an EV site developer?

Am I developing sites across multiple locations?

APPLICATION READINESS

Do I have a specific location identified?

Do I have the information and documents required?
(PG&E Commercial EV Site Requirements List)

ADDITIONAL RESOURCES

[Construction Best Practices](#)

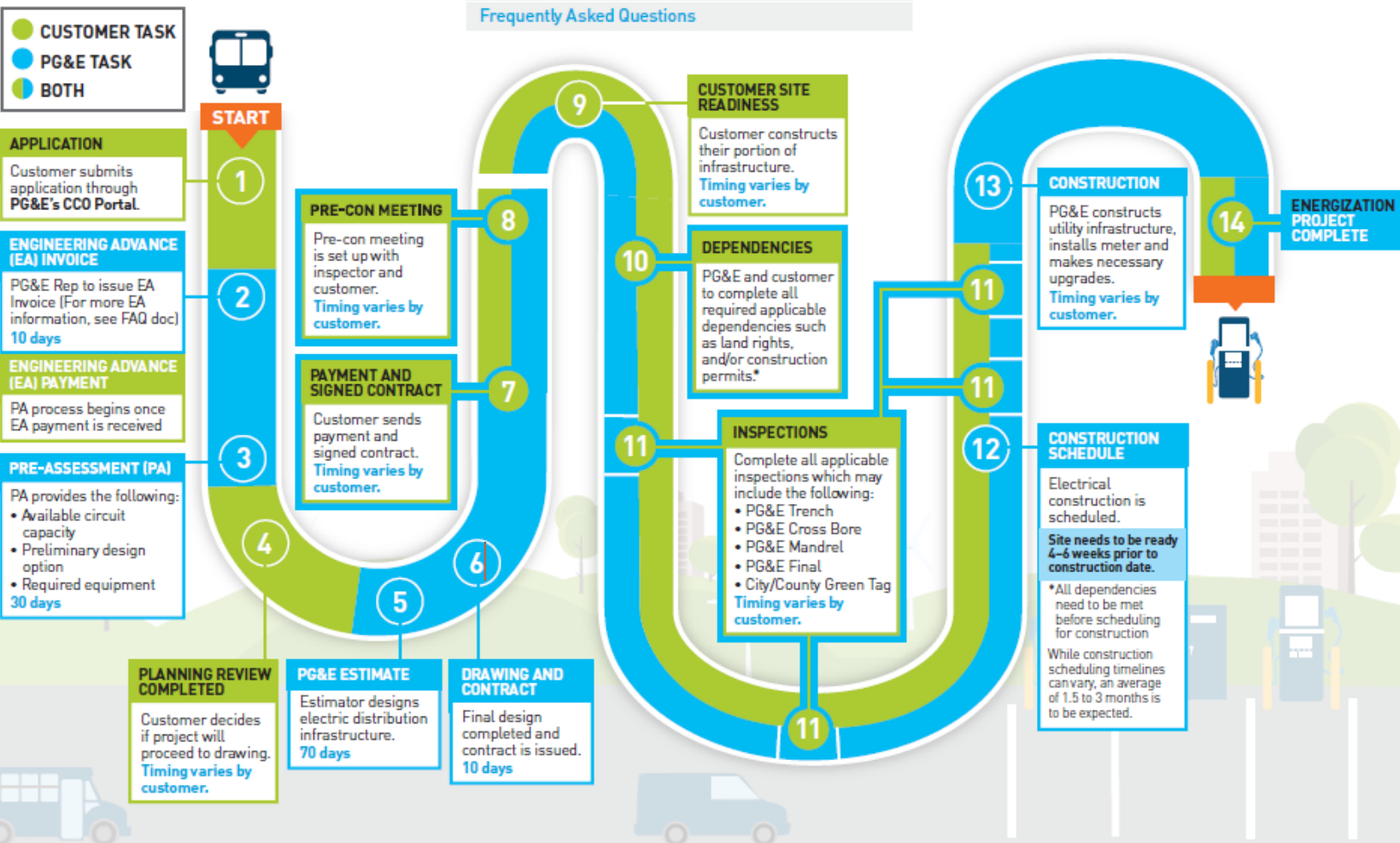
[Frequently Asked Questions](#)

KEYS TO SUCCESS

Understand applicable PG&E Standards and Process
(PG&E Greenbook)

Open communication with jurisdictional authorities

Project support from site host or landlord



Business EV rate structure

1

Customers choose subscription level, based on charging needs

High Use EV Rate:

\$95.56

/ 50 kW block
over 100kW*

Low Use EV Rate:

\$12.41

/ 10 kW block
up to 100kW

Customers that want to **manage charging loads** can opt for a lower subscription level.

2

Subscription remains consistent month-to-month



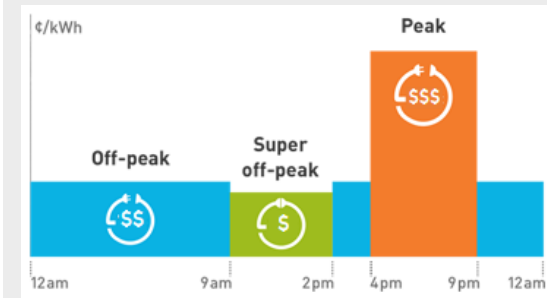
If site charging power exceeds subscription, several customer communications are triggered, and overage fees may apply.

Customers **can change subscription level** to suit their charging needs.

3

Energy usage is billed based on time-of-use pricing

Energy Charge:



~\$2.33
per e-gallon

Depends on vehicle type, season, and time of day for charging

Visit the [Business EV Rate website](#) for more information

* Values for Business High Use EV Rate Secondary (BEV2-S) voltage. For Business High Use EV Rate Primary (BEV2-P) voltage, the price of each 50 kW block is \$85.98. Please refer to the [Business EV Tariff](#) for exact values.



EV Fleet Savings Calculator



Electrify Your Fleet: Drive Change

Learn how you can start saving money and the planet.

Calculate Fuel Savings

Total Cost of Ownership

INFORMATION ▾

Planning
Grants
Vehicles

CALCULATORS ▾

Fuel Savings
Total Costs
BEV Rate
Rate Comparison
LCFS

Build a plan with PG&E

1

Check Your Eligibility

2

Review Available Funding

3

Calculate Fuel Savings

4

Collaborate with PG&E

Together, let's drive savings, sustainability, and change. We've compiled the resources you need to understand the entire process and make an informed decision.

Build A Plan

Note: Values shown for illustrative purposes. Please refer to the [EV Fleet Savings Calculator](#) at [Fleets.pge.com](#) for exact values.

Helpful resources

- [EV Fleet Website](#)
- [PG&E Integration Capacity Analysis \(ICA\) Map](#)
- [EV Fleet Application](#) ***
- [Approved List of Chargers](#)
- [Request to add Chargers to APL](#)
- [Guidance Document: Customer Owned EV Supply Infrastructure](#)
- [Requesting Letter of Support](#)
- [EV Permit Streamlining Map](#)
- [EV Fleet Terms and Conditions](#)
- [EV Fleet Easement](#)
- [EV Fleet Customer Information Sharing Agreement](#)
- [EV Fleet Non-Disclosure Agreement](#)
- [PG&E Service Territory Map](#)
- [PSPS Map and outage History](#)
- [PG&E Power Mix](#)